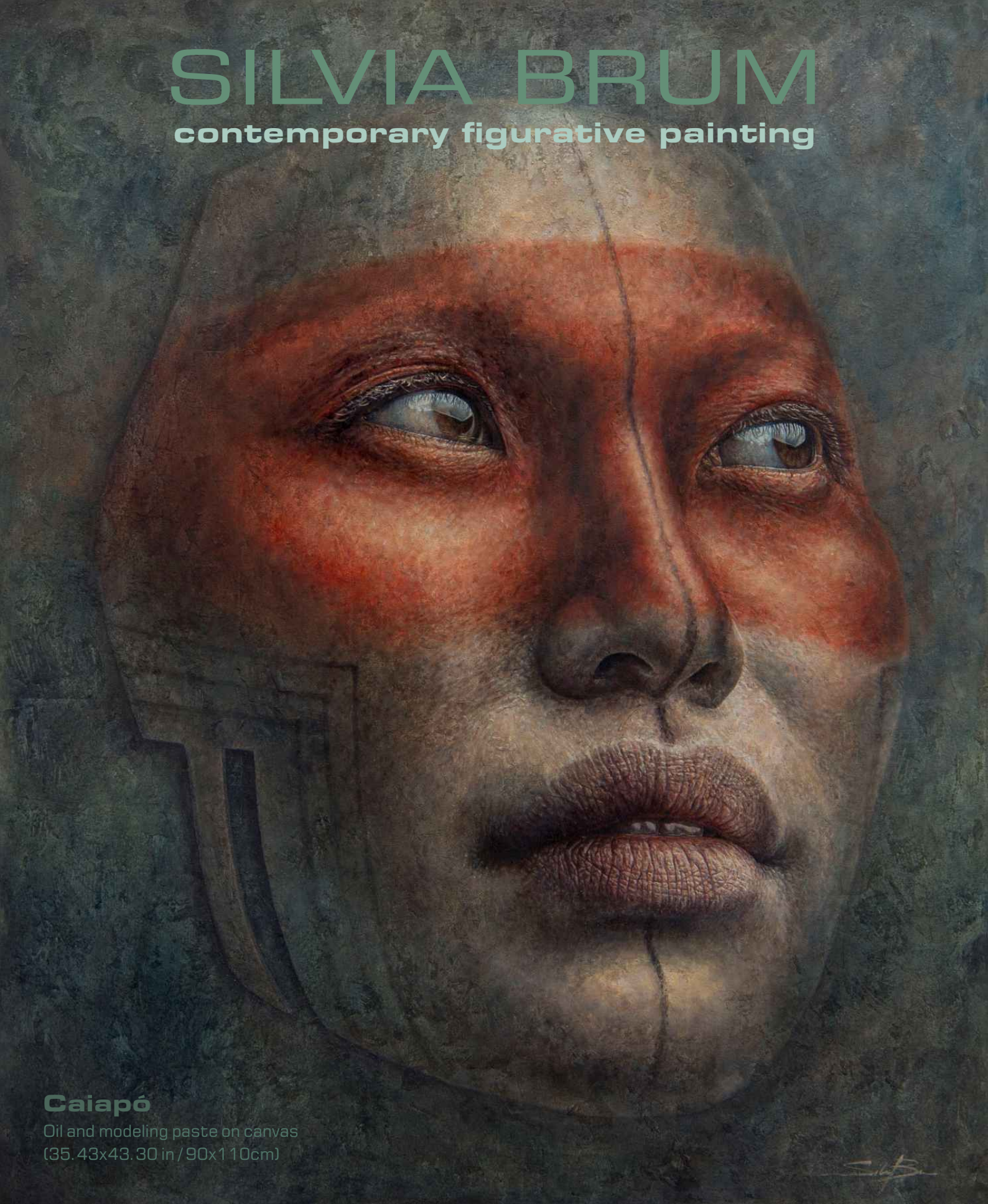


SILVIA BRUM

contemporary figurative painting



Caiapó

Oil and modeling paste on canvas
(35.43x43.30 in / 90x110cm)

Silvia Brum

Silvia Brum

(Porto Alegre/RS/Brazil, 1967)

Graduated with a degree in **Architecture** and Urbanism through UniRitter in Porto Alegre, Brazil. Completed a **painting** workshop through Atelier Livre at Porto Alegre City Hall.

The artist held various **solo** and group **exhibitions**,

such as Luz & Sombra, at the Art house Regina Simonis, in Santa Cruz do Sul/Brazil (2019), MIMETISMOS, at the Gravura Art Gallery, Porto Alegre/Brazil (2018), Silvia Brum, at the Centro de Integracao do Mercosul, Pelotas/Brazil (2003).

Participated in **group exhibitions** with Gaúcho artists at the Fundação Iberê - participants in the Leilão 2020, at Fundação Iberê, Porto Alegre/ Brazil (2021), Art South Brazil in Miami, at Art Design Gallery, Miami/USA (2019), 4 Visões demonstration, Fundação Iberê, Porto Alegre/ Brazil (2019) and Paralelo 30, at galeria Agência de Arte, Porto Alegre/ Brazil (1997).



She has artistic works in private collections as well as in the MARGS collection- Museum of Art in Rio Grande do Sul, Porto Alegre/Brazil.

Silvia lives in the city of Porto Alegre, where she specializes in the **contemporary figurative painting** style, while always maintaining the feminine figure as a central focus within her art.

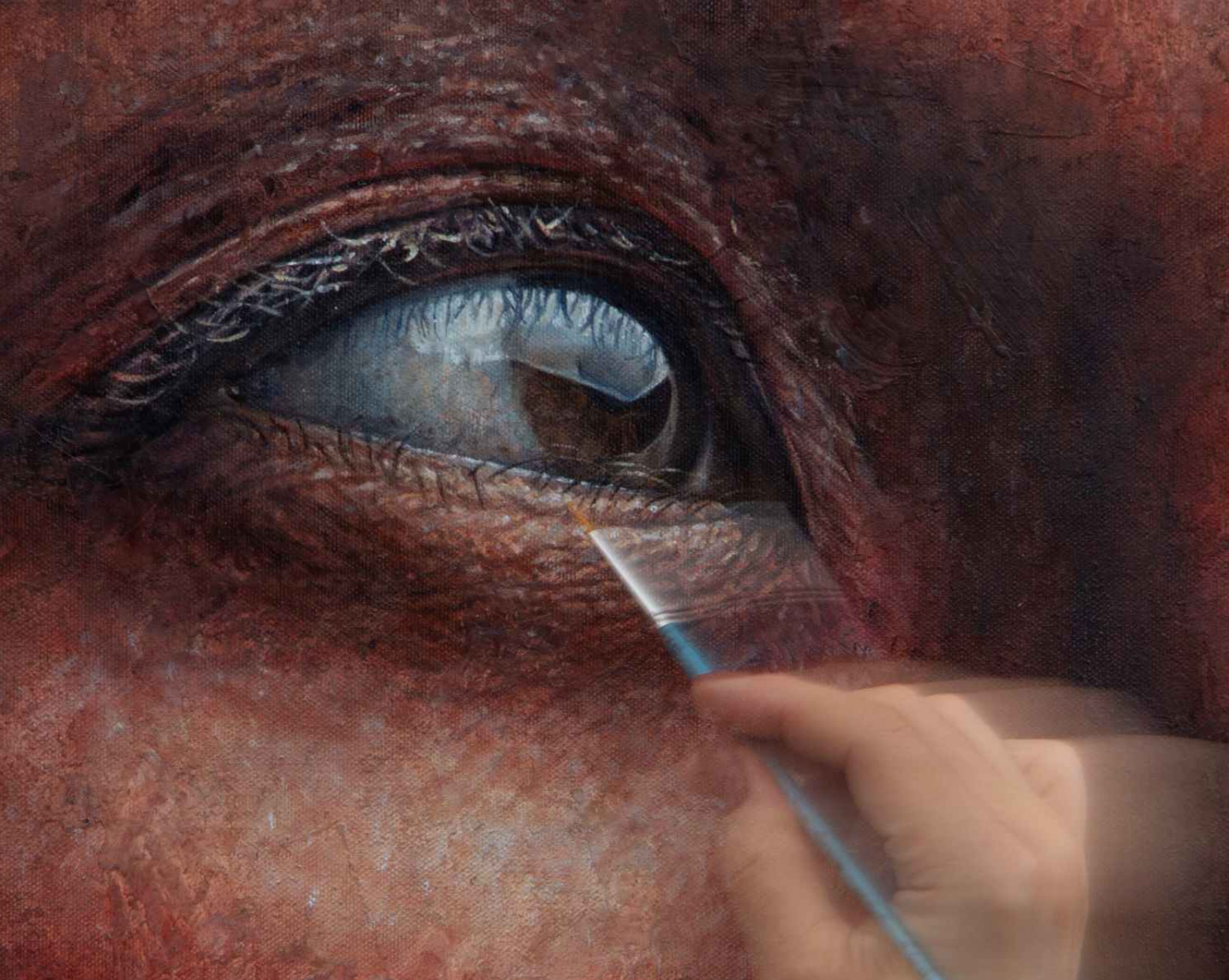
Vivid facial portrayal, particularly concentrating on eye expression, are what marks Silvia's artistic works. Painted in **oil on canvas**, or combining other techniques such as acrylic and rust on MDF.



PERSONA/

is a series of paintings where female figures are represented by masks, or personas, which function as an interface between the 'traditional' woman and the one who holds a role in society. With this resource, the artist addresses the emotional and social aspects that surround the female experience. Cracks, gaps or allegories symbolize the memories and scars of its characters, which for now stand out from their backgrounds, even though, paradoxically, they insist on remaining mimicked, inseparable from their contexts.





Caiapó

Oil and modeling paste on canvas
(43.30 x 35.43 in / 110 x 90cm)
2020

Caiapó (Kayapo), indigenous tribe of the Brazilian Amazon, fighting for the preservation of their home amid deforestation. Although the future looks uncertain, Caiapó India faces it with hope, with the strength and purity characteristic of her people.







Bronze Fragment

Oil and modeling paste on canvas
(43.30 x 35.43 in / 110 x 90cm)
2019

The irreversible is expressed through the broken ceramic on the face of the character who, even glued, will never lose her marks. When looking to the side, not satisfied, she tries to deny her impotence in the face of the real situation





Metamorphosis

Oil and modeling paste on canvas
(43.30 x 35.43 in / 110 x 90cm)
2020

The "Metamorphosis" painting represents our transformation during the quarantine confinement and the desire for a more free and true life. The character looks at the butterfly that has just emerged from the cocoon, as if looking at its own future.



Violet Fragment

Oil and modeling paste on canvas
(43.30 x 35.43 in / 110 x 90cm)
2019

The irreversible is expressed through the broken ceramic on the face of the character who, even glued, will never lose her marks. When looking to the side, not satisfied, she tries to deny her impotence in the face of the real situation.





Cyber Eva

Oil and modeling paste on canvas
(43.30 x 35.43 in / 110 x 90cm)
2019

On "Cyber Eva", I represent a woman with android cutouts and ancestral painting. She looks to the future, but proudly preserves her roots.







La Festa è Finita!

Oil and modeling paste on canvas
(43.30 x 35.43 in / 110 x 90cm)
2020

With the beginning of the pandemic, a new reality suddenly imposed itself before our eyes and we are forced to strip ourselves of certainties, routines and vanities.

The virus exposes weaknesses, indifference and injustice, but it also reminds us of how human we still are.

Let's take off the masks of superficiality ... the Party is over. La Festa è Finita!

(We should just wear the masks that fight Covid-19).





L'Or Noir (Black Gold)

Oil on 2 layers of MDF board (3D painting)
(27.55 x 27.55 in / 70x70cm)
2018

"L'Or Noir" was painted in oil on 2 layers of MDF board. Covered by gold and with her chin up, the beautiful model looks at us proud of her ethnic origins. This painting represents an important humanist reflection of the historical context that has surrounded the African continent in the last four centuries.





Porcelain

Oil, acrylic and cracking technique on
2 layers of MDF board (3D painting)
(27.55 x 27.55 in / 70x70cm)
2018

The irreversible is expressed by the broken porcelain, which, even glued, will never lose its marks. The bandage on the chin, represents a fragile repair attempt; when looking to the side, the character tries to deny her impotence.

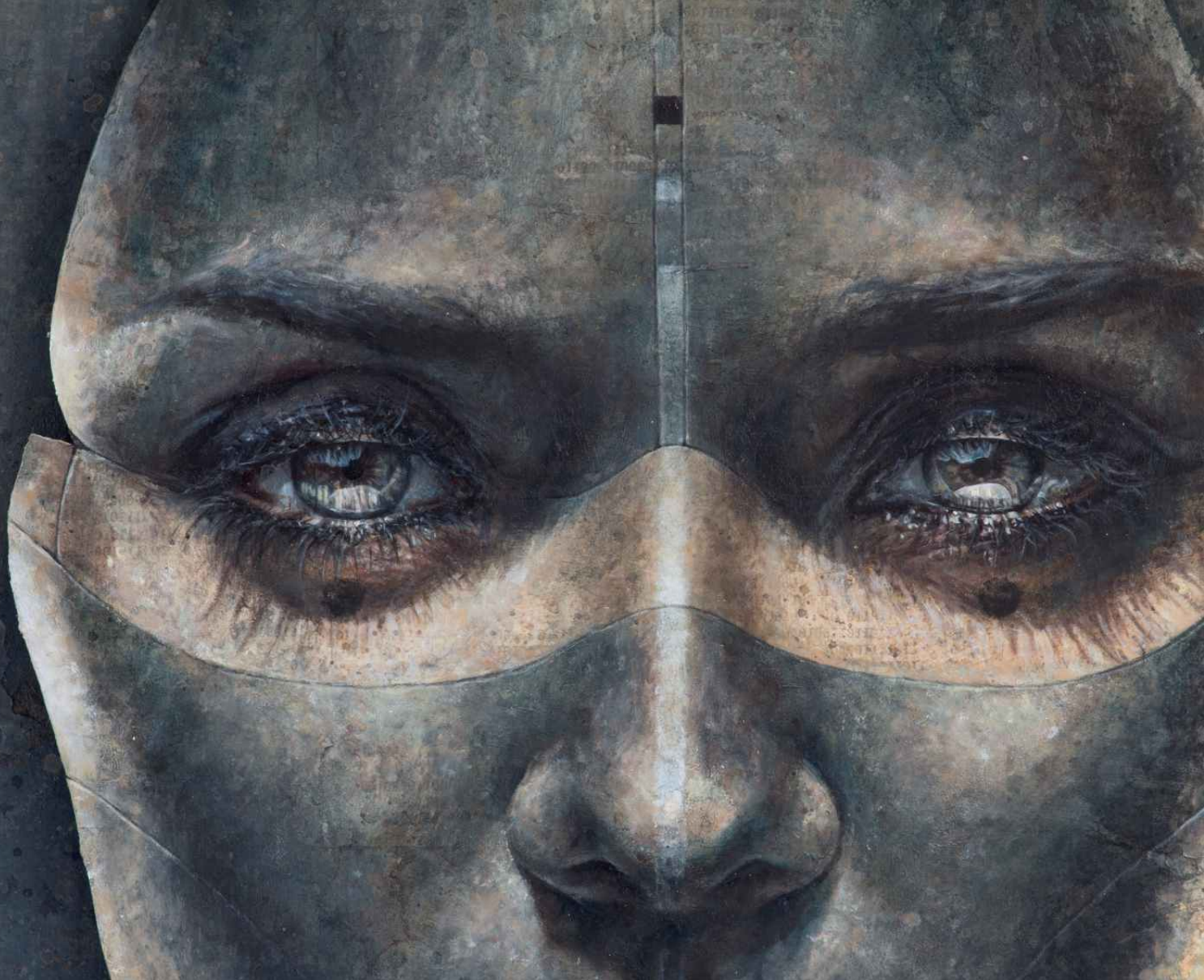




Hiroshima 広

Oil, acrylic and paper on 2 layers
of MDF board (3D painting)
(39.37 x 39.37 in / 100x100cm)
2018





Cybertribal

Oil, acrylic and paper on 2 layers
of MDF board (3D painting)
(27.55 x 27.55 in / 70x70cm)
2018





Pierrot

Oil, acrylic and paper on 2 layers
of MDF board (3D painting)
(27.55 x 27.55 in / 70x70cm)
2018





LIVE WINDOWS

In this series I present delimited people to the space of their own window. Through this “opening”, we can walk into the world of each character and explore their unique identity.





Through the Window

Oil, modeling paste and
soft pastel on canvas
(27.55 x 27.55 in / 70x70cm)
2020

During the pandemic, our view of the world has become rectangular, defined by the opening of our windows. Whether real or digital, they have never been more important; our portal to real life.

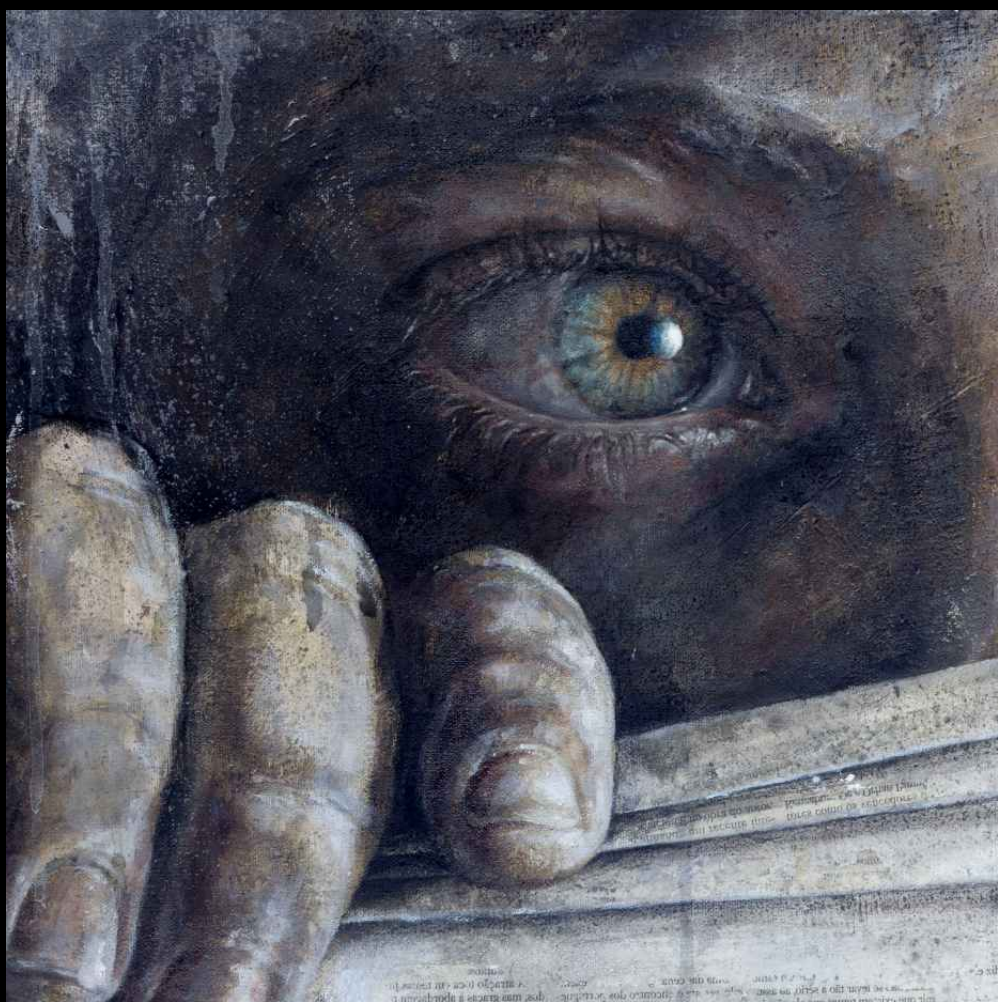




Persiana

(Window Blind)

Oil, acrylic, paper
and pastel on panel
(27,55 x 47,24 in /
70x120cm)
2017

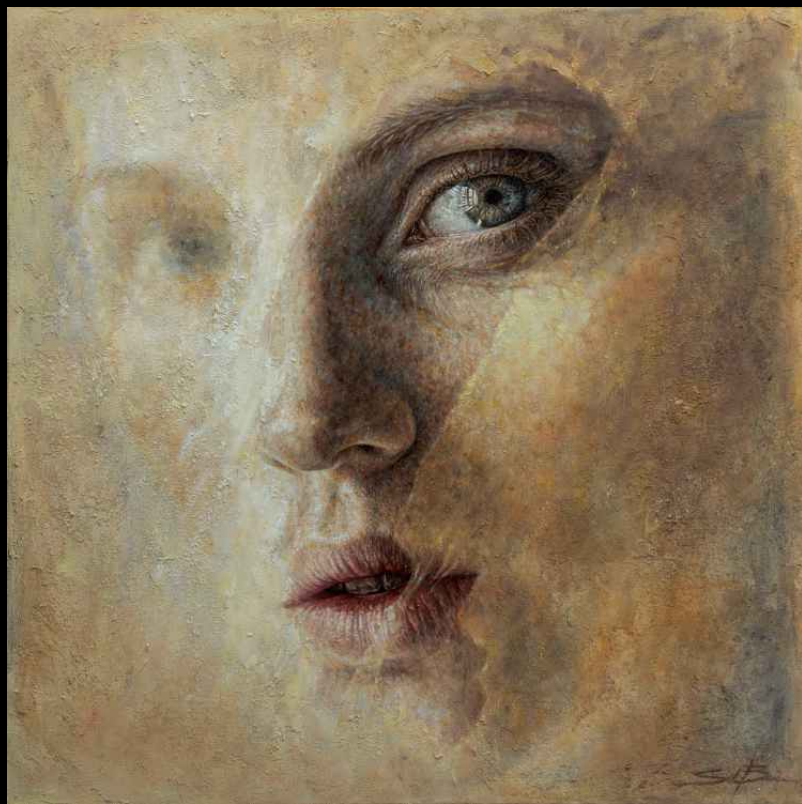




Through the Window 2

Oil, modeling paste and
soft pastel on canvas
(27.55 x 27.55 in / 70x70cm)
2021

During the pandemic, our view of the world has become rectangular, defined by the opening of our windows. Whether real or digital, they have never been more important; our portal to real life.





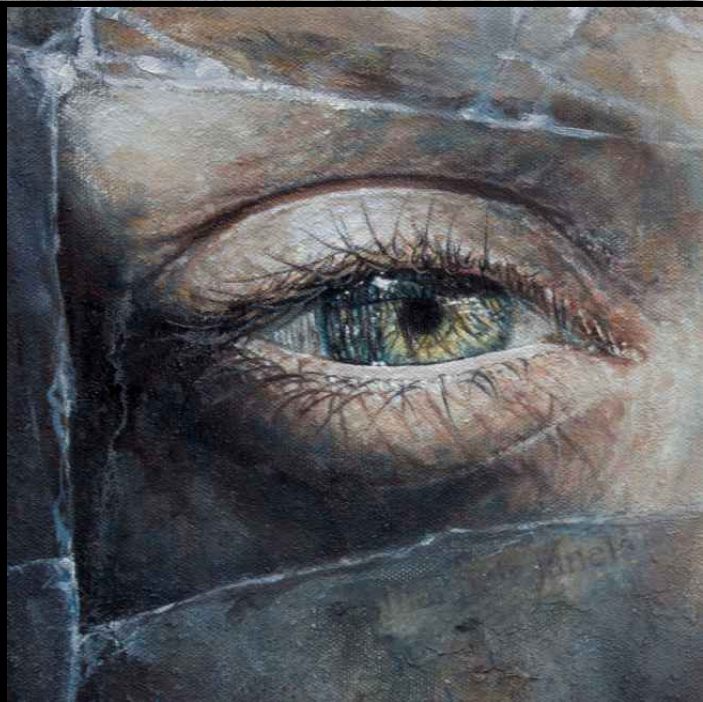
Janela Quebrada

(Broken Window)

Oil, acrylic and paper on panel

(27.55 x 35.43 in / 70x90cm)

2018





Another Window

Oil and modeling paste on canvas
(23.62 x 23.62 in / 60x60cm)
2020

During the pandemic, our view of the world has become rectangular, defined by the opening of our windows. Whether real or digital, they have never been more important; our portal to real life.





O T H E R
W O R K S





Jade Fragment

Oil on cardboard

(15.94 x 15.94 in / 40,5 x 40,5 cm)

2021

Even under the inexorable passage of time, our foot prints remain contained in fragments, whether these are memories, writings or a look. Fragments are clues to a story, or a puzzle to be pieced together.





CONTACT

silvia@silviabrum.com.br

www.silviabrum.com.br



[silviabrum](https://www.instagram.com/silviabrum)

2022